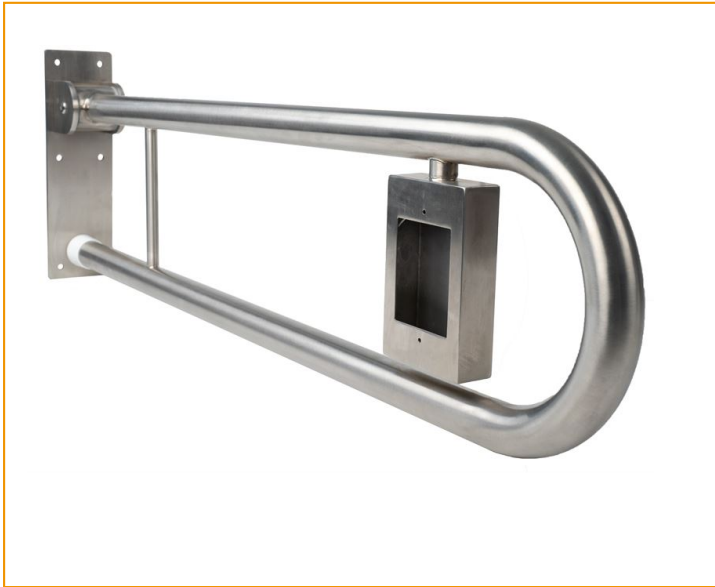


SIMPNCBLH

Simplicity Drop Down Grab Rail
With Nurse Call Button LH

Indicative Image



Material

304 Stainless Steel 32mm x 1.6mm

Dimensions

830mm from wall

Fixing

We recommend the use of F17 90mm x 90mm hardwood timber posts for all drop down grab rails

Compliance

When installed correctly this product is AS1428.1 2009 Compliant

Dimensions

